



65 W Holmium YAG

BLAZE Prime

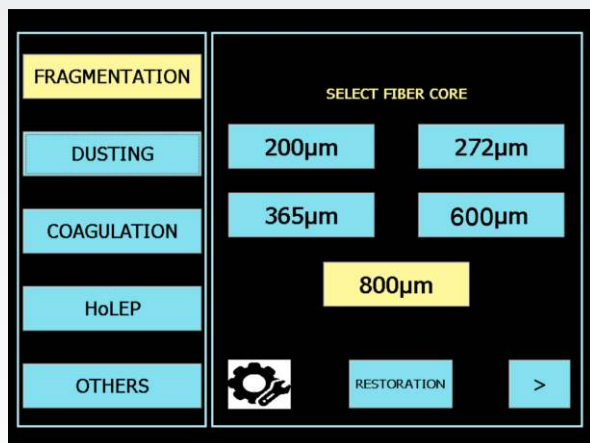
Surgical Laser System for Lithotripsy



BLAZE Prime

Allengers BLAZE Prime Holmium laser is used to generate laser beam which is intended for Lithotripsy (fragmentation and dusting of stone) and HoLEP. Advanced compressor based recirculating DI water cooling system to maintain the temperature.

APPLICATIONS AND PROCEDURES

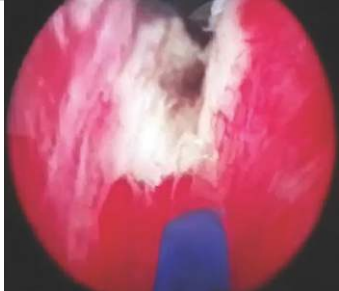


- Lithotripsy
 - Retrograde Intrarenal Surgery (RIRS)
 - Ureteroscopy (URS)
 - Percutaneous Nephrolithotomy (PCNL)
 - Mini perc
 - Micro perc
- HoLEP, BPH treatment
- Tumor (Bladder / UUT)
- BNI and Strictures

BLAZE Prime IN BRIEF

- Optical power upto 65W.
- Treatment of BPH, Bladder Tumor and HoLEP.
- "Restoration" enables the surgeon to operate the patient on previously stored / saved settings, thus saving on crucial time needed to complete the procedure.
- Variable pulse width.
- Excellent homeostasis and coagulation.
- Selectable energy and frequency range.
- Selectable level for Aiming beam and Lasing sound.
- Advanced compressor based turbo cooling system to enhance laser beam quality and efficiency of laser.
- Advanced long pulse laser with super imposed modulated pulse to minimize retropulsion and enhanced the ablation rate.
- Hand free Ready / Standby selection switch with dual foot pedal.
- Low maintenance and minimal operating costs.
- User friendly easy to operate touch screen interface.

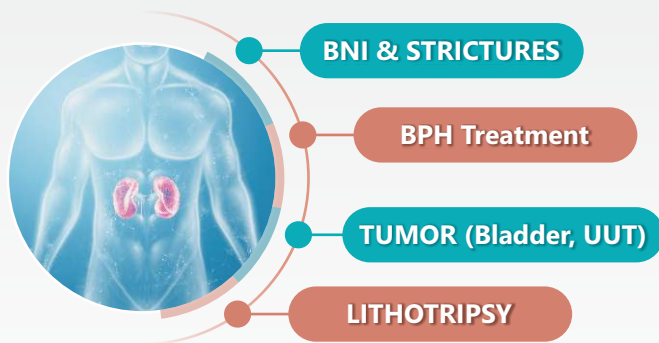




SURGICAL LASER SYSTEMS FOR LITHOTRIPSY AND PROSTATE SURGERY

Allengers Blaze Holmium surgical laser systems for lithotripsy and prostate surgery are the latest generation lasers with variable pulse width and large dynamic power range which makes procedures faster and precise.

Advanced Laser Technology with selective pulse duration for HoLEP



OPERATIVE MODE



ADJUSTABLE VIEWING ANGLES



Tilt movement of touch screen monitor



Sideways Swivel movement of touch screen monitor

Advantages of these adjustable viewing angles:

- Reduce eye fatigue while reading.
- Easy adjustment during sitting / standing reading postures.
- Optimized viewing experience due to flexible options.

IMPACT OF PULSE DURATION ON LASER LITHOTRIPSY

Various studies concluded that fragmentation rate for Long and Short pulse duration at identical power settings have different significance. Long laser pulse would result in better clinical outcome of laser lithotripsy with advantage of reducing laser fiber tip degradation and retropulsion effect.

Blaze system have a long and short pulse duration selection.



SMART INTERFACE

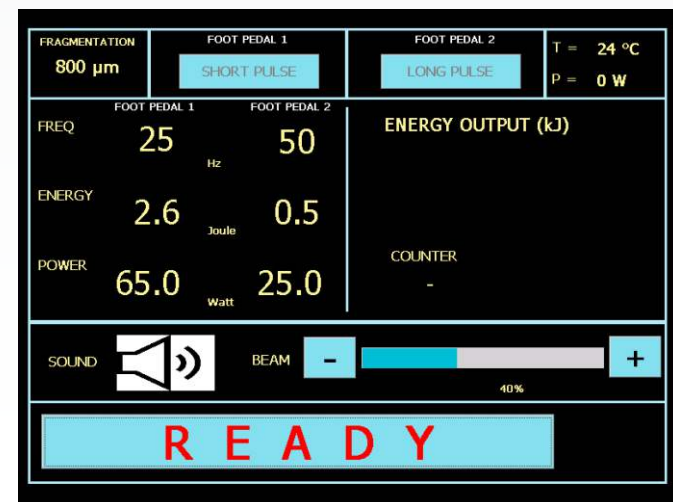
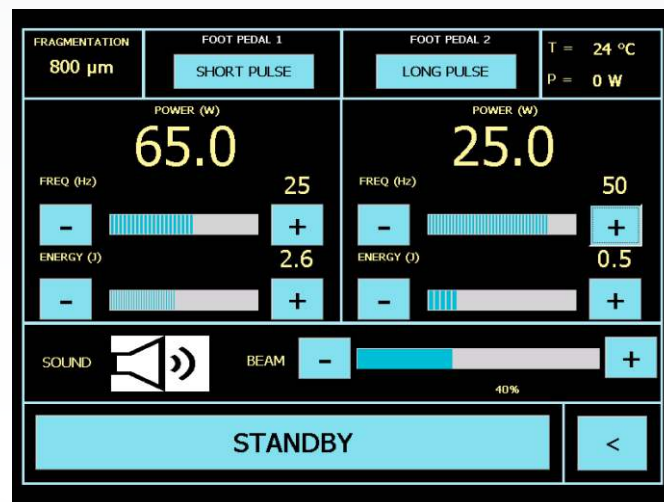
Interactive interface with short cut keys to operate functions with single and wide touch screen.

SHORT PULSE

The energy delivered by the single laser pulse occurs during a short period of time which is very effective for fragmentation of large stone & ablation of soft tissues.

LONG PULSE

Long pulse with super imposed modulated pulse technique for pulse reshaping is designed to minimize retropulsion and eliminates the need of basket abstraction. This would help to reduce the total time of procedure.



WATER COOLING SYSTEM

Allengers **BLAZE Prime** have dual inverter compressor based cooling system for significant cooling even in long running time of machine operation. It enable machine to operate uninterrupted in all climate condition.

The rapid cooling & maintained temperature to the optimal operating range of Holmium laser machine allows improved laser beam parameter to best possible range. Thus it reduces thermal lensing effect & improves life span of optical component inside laser machine and external fiber. Hence reduce the running cost in long term due to good beam parameter.



FIBERS

The BLAZE Prime's Bare reusable fiber is supplied in sterile condition are suitable for immediate first use without preconditioning. Bare fiber is indicated in general laser surgery application of different disciplines such as lithotripsy, incision, excision, vaporization and coagulation. Moreover the product can be used for fragmentation of stones and HoLEP application.

BLAZE-Prime reusable fiber have low OH for effective transmission of high power laser energy.

MULTI-FUNCTIONAL FOOT PEDAL / SWITCH

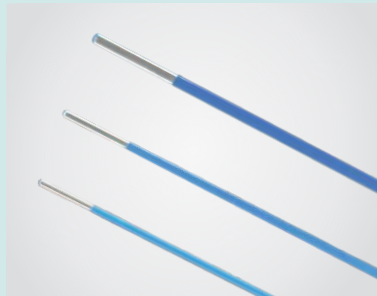
This comprises of Foot Paddle 1 or Foot paddle 2 to allow for easy switching between laser setting during procedure :-

- Standby / Ready Foot Switch : This feature enable user / doctor to have full control of laser by switching between standby / ready mode without any assistance.
- Foot paddle 1 or foot paddle 2 can be suitably used for short pulse or long pulse independently or simultaneously for different emission setting.



ACCESSORIES

- Single or reusable fiber (3 meter long) ranging from 200/272, 365, 600 and 800 μm
- Ceramic scissor
- Adjustable fiber stripper
- Safety goggle
- Tripple Foot Pedal
- Dust cover



Laser Fiber



Ceramic Scissor



Adjustable Fiber Stripper



Safety Goggle



Foot Pedal

TECHNICAL SPECIFICATIONS

Model	: Blaze Prime	Aiming Beam	: Green, 532nm (<5mW adjustable)
Laser Type	: HO : YAG	Water Cooling System	: Advanced dual inverter compressor based turbo cooling system
Wavelength	: 2100nm	Display	: Touch colour display
Laser Type	: Pulsed	Foot Switch	: Dual foot pedal with ready / standby switch
Pumping Media	: Flash Lamp Pumping	Electrical Requirement	: 1 ϕ , 230 VAC \pm 10%, 50/60Hz, <20A
Maximum Average Power	: Upto 65W	Operating Temperature	: 10 °C to 35 °C
Pulse Energy	: 0.1J to 5J	Dimensions	: W- 52cm L- 112cm H- 106cm
Pulse Duration	: Upto 1500 μ s	Weight	: <150Kg
Repetition Rate	: Upto 60 Hz	Power Cord Length	: 3mtr.
Laser Fiber	: Reusable / disposable - 200/272, 365, 600, 800 μ m		

ALLENGERS OTHER PRODUCTS

- **CARDIOLOGY** : - Tread Mill Test (TMT) - Multipara Monitor (MPM) - Electrocardiogram (ECG 3, 6 & 12 CH) - Cathlab Fixed/Mobile
- **NEUROLOGY** : - Electromyograph (EMG) - Polysomnograph (PSG) - Neuroplot (EEG)
- **RADIOLOGY** ■ **ORTHO, GASTRO, NEURO SURGERY & INTERVENTIONAL** ■ **IT SOLUTIONS**

MANUFACTURED & MARKETING DOMESTICALLY BY :

ALLENGERS GLOBAL HEALTHCARE (P) LTD.

CORPORATE OFFICE : S.C.O. 212-213-214, Sector 34-A,
Chandigarh-U.T. 160 022 (India)

Ph : +91 172 6618001, 2621913 Fax : +91 172 2621912

E-mail : global.enquiries@allengers.net

MARKETING INTERNATIONALLY BY :

ALLENGERS MEDICAL SYSTEMS LTD.

Ph : +91 172 6618081, 6618082 Fax : +91 172 2621912

E-mail : exports@allengers.net

Please visit www.allengersglobal.com for more information

Toll Free No. **1800-266-8800** (India)

For detailed technical specifications, please refer to the respective product data sheets / quotation.
Due to continuous product improvements, specifications and appearance are subject to change without prior notice.