

TECHNICAL SPECIFICATIONS*

Model	: BLAZE-prime	Aiming Beam	: Green, 532nm (<5mW adjustable)
Laser Type	: HO : YAG	Water Cooling System	: Advanced dual inverter compressor based turbo cooling system
Wavelength	: 2.1 µm	Display	: Touch colour display
Laser Type	: Pulsed	Foot Switch	: Dual foot pedal with ready / standby switch
Pumping Media	: Flash Lamp Pumping	Electrical Requirement	: 1φ, 230 VAC ±10%, 50/60Hz, <32A
Maximum Average Power	: Upto 100W	Operating Temperature	: 10 °C to 35 °C
Pulse Energy	: 0.1J to 5J	Dimensions	: W- 52cm L- 112cm H- 106cm
Pulse Duration	: Upto 1500µs	Weight	: <150Kg
Repetition Rate	: 5 to 80 Hz	Power Cord Length	: 3mtr.
Laser Fiber	: Reusable / disposable - 200/272, 365, 600, 800 µm		

*Technical Specifications may get upgraded time to time. For more information contact sales person.

ALLENGERS OTHER PRODUCTS

- **CARDIOLOGY** : - Tread Mill Test (TMT) - Multipara Monitor (MPM) - Electrocardiogram (ECG 3, 6 & 12 CH) - Holter
- **NEUROLOGY** : - Electromyograph (EMG) - Polysomnograph (PSG) - Electroencephalograph (EEG)

MANUFACTURED & MARKETING BY :

ALLENGERS GLOBAL HEALTHCARE (P) LTD.

CORPORATE OFFICE : S.C.O. 212-213-214, Sector 34-A,
Chandigarh-U.T. 160 022 (India)

Ph : +91 172 6618001, 2621913 Fax : +91 172 2621912
E-mail : global.enquiries@allengers.net

For more information, visit www.allengersglobal.com
Toll Free No. 1800-266-8800 (India)

For Enquiries :
Contact No. : 0172-6618001
E-mail : global.enquiries@allengers.net

AGHPLV01-1/07/22

For detailed technical specifications, please refer to the respective product data sheets / quotation.
Due to continuous product improvements, specifications and appearance are subject to change without prior notice.

Allengers

Passion for excellence



ADVANCED SHORT AND LONG PULSE
LASER WITH TURBO COOLING SYSTEM ...



BLAZE-prime

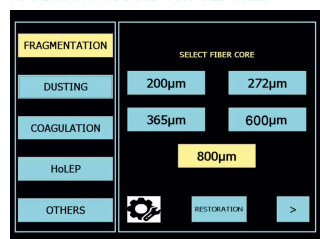
Holmium Laser System for Lithotripsy and Prostate Surgery



BLAZE-prime

Allengers BLAZE-prime Holmium Laser is used to generate laser beam which is intended for Lithotripsy (fragmentation and dusting of stone) and HoLEP. It is equipped with an advanced compressor based recirculating DI water cooling system to maintain the temperature.

APPLICATIONS AND PROCEDURES



- Lithotripsy
 - Retrograde Intrarenal Surgery (RIRS)
 - Ureteroscopy (URS)
 - Percutaneous Nephrolithotomy (PCNL)
 - Mini perc
 - Micro perc
- HoLEP, BPH treatment
- Tumor (Bladder / UUT)
- BNI and Strictures



BLAZE-prime IN BRIEF

- Optical power upto 100 W.
- Treatment of BPH, Bladder Tumor and HoLEP.
- "Restoration" enables the surgeon to operate the patient on previously stored / saved settings, thus saving on crucial time needed to complete the procedure.
- Variable pulse width.
- Excellent homeostasis and coagulation.
- Selectable energy and frequency range.
- Selectable level for Aiming beam and Lasing sound.
- Advanced compressor based turbo cooling system to enhance laser beam quality and efficiency of laser.
- Advanced long pulse laser with super imposed modulated pulse to minimize retropulsion and enhance the ablation rate.
- Hands free Ready / Standby selection switch with dual foot pedal.
- Low maintenance and minimal operating costs.
- User friendly easy to operate touch screen interface.

ACCESSORIES

- Single or reusable fiber (3 meter long) ranging from 200/272, 365, 600 and 800 µm
- Ceramic scissor
- Adjustable fiber stripper
- Safety goggle
- Foot Pedal
- Dust cover



Laser Fiber



Ceramic Scissor



Adjustable Fiber Stripper



Safety Goggle



Foot Pedal

WATER COOLING SYSTEM

Allengers **BLAZE-prime** has dual inverter compressor based cooling system for significant cooling even in long running time of machine operation. It enables machine to operate uninterrupted in all climate condition.

The rapid cooling and maintained temperature to the optimal operating range of Holmium Laser machine allows improved laser beam parameter to best possible range. Thus, it reduces thermal lensing effect and improves life span of optical component inside laser machine and external fiber, hence reduces the running cost in long term due to good beam parameter.

FIBERS

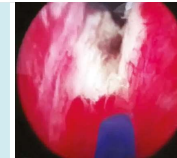
The BLAZE-prime bare reusable fiber is supplied in sterile condition and is suitable for immediate first use without preconditioning. Bare fiber is indicated in general laser surgery application of different disciplines such as lithotripsy, incision, excision, vaporization and coagulation. Moreover the product can be used for fragmentation of stones and HoLEP application.

BLAZE-prime reusable fiber has low OH for effective transmission of high power laser energy.

MULTI-FUNCTIONAL FOOT PEDAL / SWITCH

This comprises of Foot Paddle 1 or Foot Paddle 2 to allow easy switching between laser setting during procedure:-

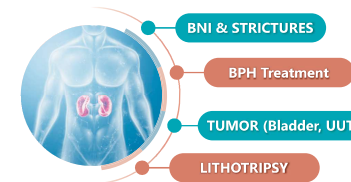
- Standby / Ready Foot Switch : This feature enables user / doctor to have full control of laser by switching between standby / ready mode without any assistance.
- Foot Paddle 1 or Foot Paddle 2 can be suitably used for short pulse or long pulse independently or simultaneously for different emission setting.



Advanced Laser Technology with selective pulse duration for HoLEP

HOLMIUM LASER SYSTEM FOR LITHOTRIPSY AND PROSTATE SURGERY

Allengers BLAZE-prime Holmium Laser System for lithotripsy and prostate surgery is the latest generation laser with variable pulse width and large dynamic power range which makes procedures faster and precise.



ADJUSTABLE VIEWING ANGLES



Tilt movement of touch screen display



Sideways Swivel movement of touch screen display

Advantages of these adjustable viewing angles:

- Reduces eye fatigue while reading.
- Easy adjustment while reading during sitting and standing postures.
- Optimized viewing experience due to flexible options.

IMPACT OF PULSE DURATION ON LASER LITHOTRIPSY

Various studies concluded that fragmentation rate for Long and Short pulse duration at identical power settings have different significance. Long laser pulse would result in better clinical outcome of laser lithotripsy with advantage of reducing laser fiber tip degradation and retropulsion effect.

BLAZE-prime Holmium Laser has a long and short pulse duration selection.

SMART INTERFACE

Interactive interface with short cut keys to operate functions with single and wide touch screen.

SHORT PULSE

The energy delivered by the single laser pulse occurs during a short period of time which is very effective for fragmentation of large stones and ablation of soft tissues.

LONG PULSE

Long pulse with super imposed modulated pulse technique for pulse reshaping is designed to minimize retropulsion and eliminates the need of basket abstraction. This would help to reduce the total time of procedure.



FRAGMENTATION	FOOT PEDAL 1	FOOT PEDAL 2	T = 24 °C
800 µm	SHORT PULSE	LONG PULSE	P = 0 W
POWER (W)	65.0	25.0	
FREQ (Hz)	25	50	
ENERGY (J)	2.6	0.5	
SOUND	BEAM	40%	
STANDBY			

FRAGMENTATION	FOOT PEDAL 1	FOOT PEDAL 2	T = 24 °C
800 µm	SHORT PULSE	LONG PULSE	P = 0 W
FREQ	25 Hz	50 Hz	
ENERGY	2.6 Joules	0.5 Joules	
POWER	65.0 Watt	25.0 Watt	
SOUND	BEAM	40%	
READY			