

# Allengers

*Passion for excellence*



Advanced Short And Long Pulse Laser  
With Temperature Controlled Cooling System ...



**Blaze**  
35W Holmium YAG

# BLAZE

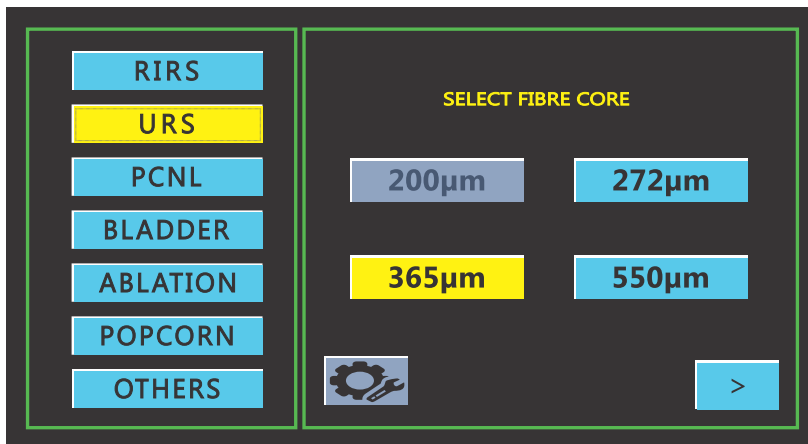
Surgical Laser System for Lithotripsy



## BLAZE

Allengers Blaze Holmium surgical laser system for lithotripsy is the latest laser generation with variable pulse width and large dynamic power range which makes procedures faster and precise. Advance temperature controlled dual Chiller system makes the BLAZE one of the best laser especially for long duration procedures even at high ambient temperatures.

## APPLICATIONS AND PROCEDURES



- Lithotripsy
- RIRS (Retrograde Intrarenal Surgery)
- URS (Ureteroscopy)
- PCNL (Percutaneous Nephrolithotomy)
  - Mini perc
  - Micro perc
- Urethrotomy tumor excision
- TUIP (Transurethral Incision of small Prostate)
- Soft tissue surgery

## BLAZE IN BRIEF

- Optical power upto 35W
- Variable pulse width
- Long pulse for dusting and reduced stone retropulsion
- Short pulse for effective fragmentation of hard and large stone
- Excellent homeostasis and coagulation
- Very effective temperature controlled cooling system
- Selectable energy & frequency range
- Selectable level for Aiming beam and Lasing sound
- Light weight elegant design
- Low maintenance and minimal operating costs
- User friendly easy to operate touch screen interface



## OPERATIVE MODE

**ABLATION**

**COAGULATION**

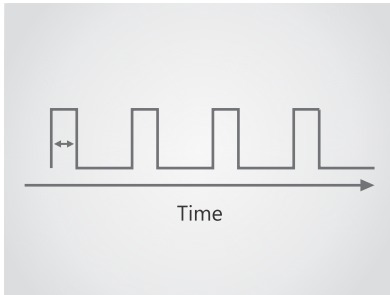
**DUSTING**

**FRAGMENTATION**

## IMPACT OF PULSE DURATION ON LASER LITHOTRIPSY

Various study concluded that fragmentation rate for Long and Short pulse duration at identical power settings have different significance. Long laser pulse would result in better clinical outcome of laser lithotripsy with advantage of reducing laser fiber tip degradation and retropulsion effect.

Blaze system have a long and short pulse duration selection.

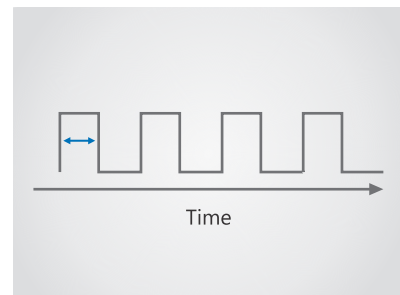


### SHORT PULSE

The energy delivered by the single laser pulse occurs during a short period of time which is very effective for fragmentation of large stone & ablation of hard tissues.

### LONG PULSE

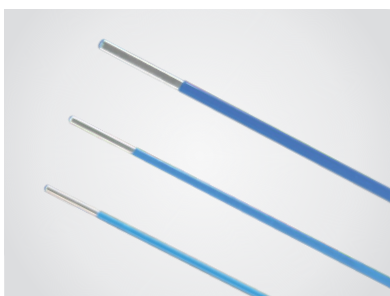
In long pulse mode the same amount of energy is distributed over longer period of time as compared to short pulse and the same is very effective for dusting the soft stone with minimum retropulsion and eliminate the need of basket extraction. This would help to reduce the total time of procedure.



## COOLING SYSTEM

BLAZE has integrated temperature controlled system that is very effective for long time operation even at high ambient temperature with almost constant power delivered. BLAZE comprises of compressor based dual chiller system for fast cooling of re-circulating water.

The compressor based cooling system produces less noise than the competitive products with radiators and fan only.



Laser Fiber

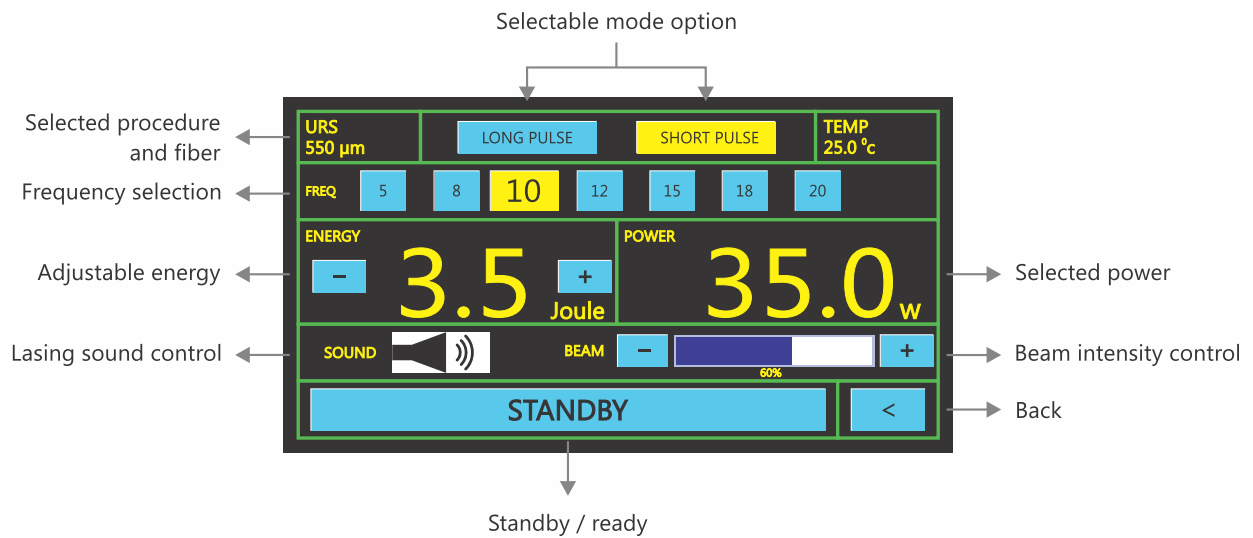
### FIBERS

The BLAZE Bare reusable fiber is supplied in sterile condition are suitable for immediate first use without preconditioning. The BLAZE Bare fiber is indicated in general laser surgery application of different disciplines such as incision, excision, vaporization and coagulation. Moreover the product can be used for fragmentation of stones.

BLAZE reusable fiber have low OH for effective transmission of high power laser energy.

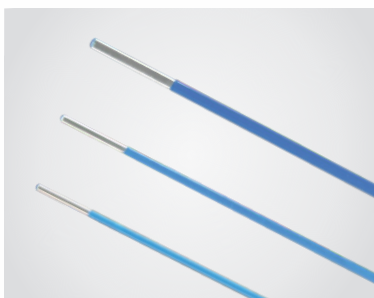
## SMART INTERFACE

Interactive interface with short cut keys to operate functions with single and wide touch screen .



## ACCESSORIES

- Single or reusable fiber ranging from 200 / 272, 365 and 550  $\mu$ m, 3 meter long
- Fiber Tester
- Ceramic scissor
- Adjustable fiber stripper
- Safety goggle
- Foot switch
- Fiber holding stand
- Dust cover



Laser Fiber



Fiber Tester



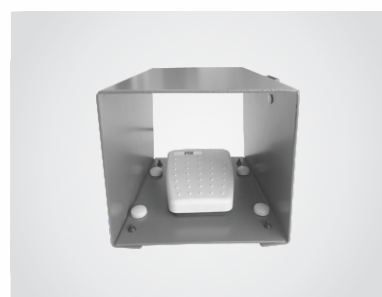
Ceramic Scissor



Adjustable Fiber Stripper



Safety Goggle



Foot Switch

## TECHNICAL SPECIFICATIONS

Laser type	: HO : YAG
Wavelength	: 2.1 $\mu$ m
Max. optical power	: 35W
Pulse energy	: 0.1 to 5J
Pumping media	: Flash Lamp pumped
Pulse duration	: 150 to 1500 $\mu$ s
Pulse frequency	: 5 to 20Hz
Aiming beam	: Green 532 nm (<5mW adjustable intensity)
Laser fiber	: 200 / 272, 365 and 550 $\mu$ m
Connector type	: SMA-905 connector for flexible fiber
Activation	: Front foot switch
Cooling	: Temperature controlled close water system
Power Supply	: 230 V AC $\pm$ 10%, 50 Hz, 10 Amp.
Operating Temperature	: 10°C to 35°C
Dimensions	: 87.5 cm x 30.0 cm x 96.0 cm (approx.)
Weight	: < 85 kg

Technical Specification may get upgraded time to time. For more information contact sales person.

## ALLENGERS OTHER PRODUCTS

- **CARDIOLOGY** : - Tread Mill Test (TMT) - Multipara Monitor (MPM) - Electrocardiogram (ECG 3, 6 & 12 CH)  
- Cathlab (Fixed/Mobile)
- **NEUROLOGY** : - Electroencephalograph (EEG) - Electromyograph (EMG) - Polysomnograph (PSG)
- **UROLOGY** : - Lithotripter (E.S.W.L.) ■ **ORTHO, GASTRO, NEURO SURGERY & INTERVENTIONAL**
- **RADIOLOGY** ■ **IT SOLUTIONS**

MANUFACTURED & MARKETING DOMESTICALLY BY :

**ALLENGERS GLOBAL HEALTHCARE (P) LTD.**

Ph : +91 172 6618000-99, 2621913 Fax : +91 172 2621912 E-mail : sales.enquiry@allengers.net

MARKETING INTERNATIONALLY BY :

**ALLENGERS MEDICAL SYSTEMS LTD.**

Ph : +91 172 6618081, 6618082 Fax : +91 172 2621912 E-mail : exports@allengers.net

**CORPORATE OFFICE** : S.C.O. 212-213-214, Sector 34-A, Chandigarh-U.T. 160 022 (India)

Please visit [www.allengers.com](http://www.allengers.com) for more information Toll Free No. 1800-266-8800 (India)

**For Enquiries :**  
**Contact No. : 0172-6618001**  
**E-mail : global.enquiries@allengers.net**

For detailed technical specifications, please refer to the respective product data sheets / quotation.

Due to continuous product improvements, specifications and appearance are subject to change without prior notice.